



MURDOCK SOCIETY TRIP TO

# CRYSTAL BRIDGES

OCTOBER 22 THROUGH 24, 2021



CELEBRATE THE AMERICAN SPIRIT IN A SETTING THAT UNITES THE  
POWER OF ART WITH THE BEAUTY OF NATURE

# A WORLD-CLASS COLLECTION ON 120 ACRES

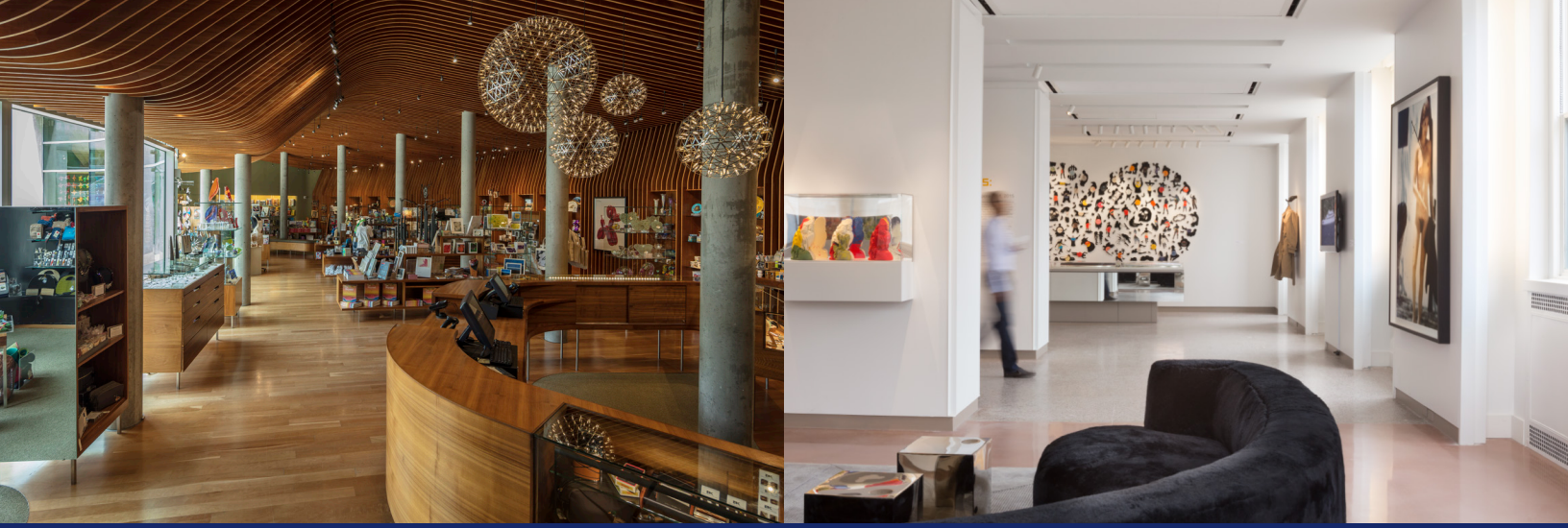


The Murdock Society's next excursion is a "mini trip" to Bentonville in the Ozark hills. The small sleepy village has mushroomed to become a national destination. Sam Walton headquartered his Wal-Mart empire in the town. His daughter, Alice, and family opened the Crystal Bridges Museum of American Art in 2011, and it is now an international tourist attraction. The Murdock Society visited Crystal Bridges in 2012, but the

museum has continued to evolve and expand since our visit . . . more world-class art, the expansion of the gardens and grounds including the addition of a signature Frank Lloyd Wright House, and the opening of The Momentary in February 2020.

The Momentary has it all in one facility—experimental gallery and theater spaces, artist studios, concert and festival plaza, great bistro, and rooftop bar (PICTURED BELOW). Let's see what we think about that rooftop bar!



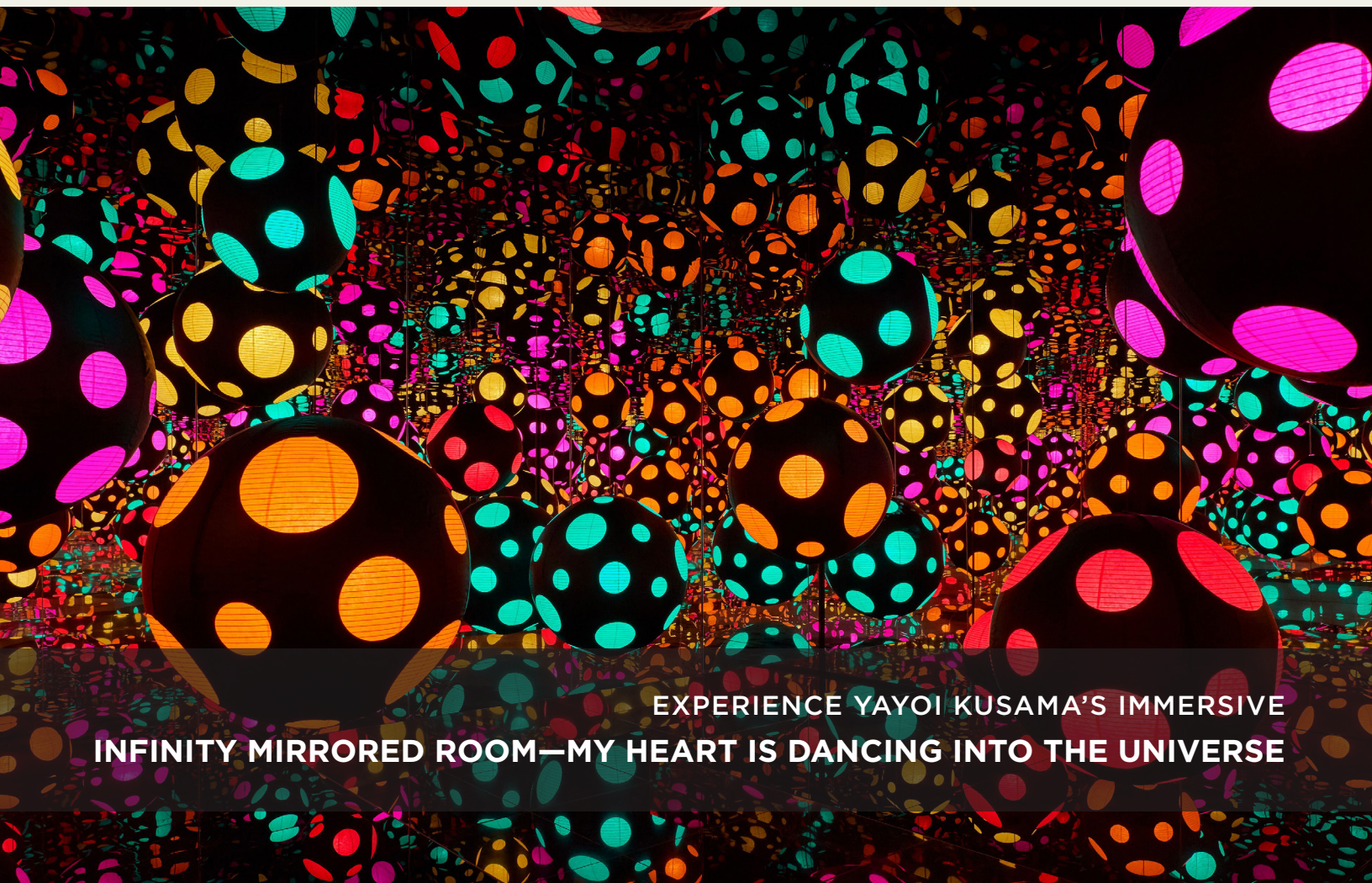


No Murdock trip is complete without thoughtful attention to food and drink. We are hard at work on memorable hot spots.

Our hotel is the 21C . . . the emerging hotel concept that includes an art collection/museum at each location. In fact, the hotel boasts its own curator, whom we will meet for a tour of the extraordinary galleries.

This compact adventure will occur in October, with our bus leaving on Friday, October 22, and returning on Sunday, October 24.

**WAM** | **MURDOCK SOCIETY**



EXPERIENCE YAYOI KUSAMA'S IMMERSIVE  
INFINITY MIRRORED ROOM—MY HEART IS DANCING INTO THE UNIVERSE

# REGISTRATION

We are limiting this special trip to **40 participants only** due to the constraints of moving a group in and around Bentonville.

Trip registration sign-up deadline is **August 2**.  
We recommend early registration to secure your spot!



The Momentary, a cheese-factory-turned-contemporary-art-venue

Register with deposit at [wichitaartmuseum.org/murdocktrip2021](http://wichitaartmuseum.org/murdocktrip2021) or send a check in the enclosed envelope payable to Wichita Art Museum.

Want help with registration?  
Call Kourtney Carson at 316-268-4905.

Questions? Call Bud Gates, Murdock Society Trip Committee Chair at 316-210-5252.

The travel opportunity is exclusively for current members of the Wichita Art Museum's Murdock Society.

## WICHITA ART MUSEUM



# MURDOCK SOCIETY TRIP TO

# CRYSTAL BRIDGES

BENTONVILLE, ARKANSAS

OCTOBER 22-24, 2021

---

## COMMITTEE

Bud Gates, Suzie Ahlstrand, Martin Bauer, Jeff Kennedy, Jenny Paulsen, and Patricia McDonnell

---

## Registration opens now through August 2, 2021.

Complete this registration form and mail to:

Wichita Art Museum  
c/o Murdock Society  
1400 West Museum Boulevard  
Wichita, Kansas 67203

- ▶ Murdock trip to Bentonville is limited to 40 people.
- ▶ Registrations are accepted in the order they are received.
- ▶ If the trip is over-subscribed, a waiting list will be established.

## CANCELLATION POLICY

All payments are subject to a cancellation policy. **We highly suggest that you self-insure participation due to the penalty provisions.**

\* \_\_\_\_\_ **Initial** here indicating you understand the cancellation policy as outlined below:

- ▶ Full registration fee (per person) will be forfeited if not cancelled on or before August 2, 2021.

All cancellation notices **MUST** be received by Patricia McDonnell in writing at [mcdonnell@wichitaartmuseum.org](mailto:mcdonnell@wichitaartmuseum.org).

SPECIAL REQUESTS IF ANY

---

---

---

## TRAVELERS

\_\_\_\_\_  
Member's full name (First, middle, last name)

\_\_\_\_\_  
Spouse/Guest full name (First, middle, last name)

\_\_\_\_\_  
Address

\_\_\_\_\_  
City

\_\_\_\_\_  
State

\_\_\_\_\_  
Zip

\_\_\_\_\_  
Member email address

\_\_\_\_\_  
Member mobile phone

\_\_\_\_\_  
Spouse/Guest email address

\_\_\_\_\_  
Spouse/Guest mobile phone

A portion of the cost for this trip supports the Wichita Art Museum and is tax-deductible.

## WAIVER OF LIABILITY

In consideration of your organizing, arranging, and permitting me to attend and participate in the Murdock trip to Arkansas, I hereby release and discharge Murdock Society of Wichita Art Museum, The Wichita Art Museum, Inc., and City of Wichita, their officers, directors, employees, agents, representatives, successors, and assignees from all actions, causes of action, suit costs, leases, expenses, claims, demands, damages, and judgments against their officers, directors, employees, agents, and representatives which I (we), my heirs, executors, administrators, successors, and assignees had, now have, or wherewith can, shall, or may have, resulting from or arising in connection with any negligence of your officers, directors, employees, agents, or representatives whether resulting directly or indirectly, from or relating to my travel to or from attendance at or participation in the Murdock Society trip to Arkansas, except such actions, damages, claims, and judgments which are caused by or result from your willful misconduct or gross negligence. I further agree that this release be governed by the laws of the State of Kansas. I have read the above information and understand my responsibilities related to the instructions, fees, payment schedule, cancellation penalties, and waiver of liability to the Murdock Society, The Wichita Art Museum, Inc., and City of Wichita.

\_\_\_\_\_  
Member's Signature

\_\_\_\_\_  
Date

\_\_\_\_\_  
Second Signature

\_\_\_\_\_  
Date

## PLEASE NOTE

Should you have any deviation to the schedule from the trip as planned, this must be arranged prior to August 2, 2021.

This trip will include walking and time on your feet. If you require assistance, you must make those arrangements on your own.

## TRIP COST

\$2,900\* double-occupancy or

\$1,695\* per person single-occupancy and includes:

- three days and two nights hotel accommodations
- transportation by bus, an Executive Recliner Motorcoach for a first-class experience
- all educational sessions, breakfasts, lunches, dinners, receptions, social events, and transportation between venues

## PAYMENT SCHEDULE PER PERSON

**TOTAL REGISTRATION CUTOFF: August 2, 2021**

\$1,450 per person, double occupancy (\$2,900)

\$1,695 per person, single occupancy

### Payment

My check made payable to

**Wichita Art Museum** is enclosed in the amount of

\$ \_\_\_\_\_

Please charge \$ \_\_\_\_\_ to my:

VISA | Master Card | Discover | American Express

\_\_\_\_\_  
Name on card

\_\_\_\_\_  
Card number

\_\_\_\_\_  
Expiration date

\_\_\_\_\_  
CVV code

\_\_\_\_\_  
Signature

### Office Use Only

Date Received \_\_\_\_\_

Staff Initials \_\_\_\_\_

Deposit Amount \_\_\_\_\_

Process Method \_\_\_\_\_

Date \_\_\_\_\_

Authorized \_\_\_\_\_

Date Received \_\_\_\_\_

Staff Initials \_\_\_\_\_

Balance Amount \_\_\_\_\_

Process Method \_\_\_\_\_

Date \_\_\_\_\_

Authorized \_\_\_\_\_