



WICHITA ART MUSEUM

MURDOCK SOCIETY



Two “parties” are in development for Murdock members. Always, they are opportunities to connect with art and friends in exceptional private homes or other special settings. 2021 has plans to once again intrigue, surprise, and create some fun!

Murdock Society members also have exclusive entrée to Patron Previews, a special program to kick off major exhibition openings. Dates ahead for 2021 include February, June, and September 25.

Murdock Society membership begins at \$750 annually for an individual and \$1,000 annually for a dual membership. Membership dues are philanthropic (with \$700/\$950 as a charitable tax deduction) and provide generous and vital direct support for museum exhibitions and programs.

WAM | MURDOCK SOCIETY

Murdock Speakers—Nationally prominent art-world figures give fascinating talks on timely topics. 2021 focuses on “Glass Art Goes Big.” Presentations include optional dinner.

Murdock Parties—Twice a year, Murdock Society members gather at the homes of art collectors or savvy Wichita venues for festive mingling, art appreciation, and laughter.

Murdock Patron Previews—Patron Previews offer special programs with exhibition artists and curators to kick off Members’ Opening Parties.

Murdock Trips—Not-to-be-missed forays to art-world hotspots that include exclusive entrée to spectacular private homes, behind-the-scene tours, discussion with art-world luminaries, exceptional dining experiences, plus the spirited camaraderie of fellow Murdock Society members and the WAM director.

Through generous contributions, the enlightened Murdock Society members proactively enable the Wichita Art Museum to engage the community in meaningful encounters with works of art and make a positive impact on the quality of life and cultural landscape of Wichita and the region.



MURDOCK SOCIETY MEMBERSHIP

- ◆ Individual Patron \$750–\$2,499
- ◆ Dual Patron \$1,000–\$2,499
- ◆ Benefactor \$2,500–\$4,999
- ◆ Director’s Circle \$5,000–\$9,999

For information regarding major donor levels, please inquire with the museum director.

WICHITA ART MUSEUM
1400 West Museum Boulevard
Wichita, Kansas 67203
For membership information, call 316-268-4921.
wichitaartmuseum.org/murdock

2021

MURDOCK SOCIETY OF THE WICHITA ART MUSEUM





MURDOCK SOCIETY of the Wichita Art Museum

The Murdock Society is the Wichita Art Museum’s premier patron group. Wichitans with a curiosity about cultural trends and art-world developments—people who are eager to combine learning with lively socializing—assemble for a variety of Murdock gatherings across the year. Spirited camaraderie pairs with exploring ideas and discovering new artists—all laced with a sense of adventure and levity. A speaker series, house parties, exhibition opening patron previews, and trips comprise the lineup of Murdock Society programs.

The Murdock Society takes its name from the civic-minded and cultured Murdock family of Wichita. Louise Caldwell Murdock left a substantial bequest to establish the Roland P. Murdock Collection in honor of her husband, publisher of the *Wichita Eagle* and prominent city leader. The bequest challenged the City of Wichita to house and maintain the collection devoted to American art, and this inspired act of generosity set in motion the establishment of the Wichita Art Museum. The museum now cares for one of the most distinguished collections of American art, thanks to the forward-looking insight and rare generosity of Louise and Roland Murdock. Today’s Murdock Society members, in similar fashion, invest in the ongoing cultural vibrancy of Wichita through annual patron-level membership.

INVEST in the ongoing cultural vibrancy of Wichita through annual patron-level membership



MURDOCK SOCIETY 2021 PROGRAMS

Go big or go home! We should no longer think only of a vase or decorative object on a pedestal when thinking of glass art. With the Studio Movement that emerged in the 1960s and 1970s, contemporary glass artists have taken on increasingly larger and larger scale. WAM’s chandelier by Dale Chihuly is a prime example. WAM is excited by a new original commission that artist Beth Lipman will create



in 2021 for an impressive large-scale hanging sculpture in the entry Boeing Foyer. For 2021 Murdock Mixology, we will learn about glass art on a grand

scale in the contemporary scene. As we wait for WAM’s next masterpiece, let’s explore the context for Lipman’s next icon for WAM and Wichita. Don’t miss a single gathering as together Murdock patrons meet and mingle with star curators, producers, and artists in the 2021 Murdock Mixology series.

2021 will begin with virtual events. As the year progresses, we have plans for Murdock Society events to return to in-person talks, parties, and a fall trip.

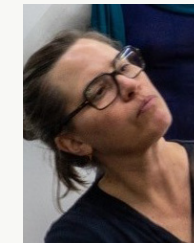
MURDOCK MIXOLOGY SPEAKERS



Thursday, February 18

SUSIE SILBERT, CURATOR OF CONTEMPORARY GLASS ART, CORNING MUSEUM OF GLASS

How can we make sense of glass art on a grand scale? Think Chihuly at botanical gardens around the world, as one incredible example. Our favorite expert on the subject will explore what inspired artists to try new and larger work starting in the 1960s. She will survey the important artists who led the way and those continuing to innovate now. The talk will be eye-opening, and no one is more engaging on this topic than the lively Susie Silbert, who spoke at WAM in 2019. She has been the lead contemporary curator at Corning Museum of Glass for five years.



Sunday, February 21

KAREN LAMONTE, ARTIST, PRAGUE

Karen LaMonte is internationally regarded for her life-size, cast-glass sculptures of the human form. She crafts captivating Grecian robes, Japanese kimono, and evening gowns devoid of the wearer. LaMonte said, “I use the absent nude cloaked in transparent glass dresses to investigate the tension between humanism and eroticism, the physical and the ethereal, the body and the spirit.” The masterful technique to create the large glass sculptures is itself awe-inspiring. Art publisher Rizzoli just came out with the latest book on LaMonte’s extraordinary work with essays by leading scholars and critics. This is an artist talk you really should not miss!



Thursday, April 22

DAN SCHWOERER AND LANI MCGREGOR, BULLSEYE GLASS ENTREPRENEURS, PORTLAND, OREGON

Bullseye Glass manufactures colored glass for art and architecture. Glass artist Dan Schwoerer founded the company in the 1970s and runs the enterprise with his wife, Lani McGregor. They also collaborate with

artists providing R&D plus fabrication and installation expertise. Many renown artists have turned to Bullseye to produce incredible projects at architectural scale. Murdock 2014 travelers will fondly remember Dan and Lani from our visit to their Portland factory, gallery, and home. This pair defines the term “dynamic duo,” as “Bullseye is a small company with worldwide influence.” Learn about the audacious adventures of Bullseye Glass in the talk by this phenomenal art-world couple.



Thursday, October 7

BETH LIPMAN, ARTIST, WISCONSIN

Art critic Johanna Fateman called artist Beth Lipman’s current New York exhibition “a seductive, cinematic affair.” Murdock patrons who met Lipman when she participated in WAM’s 2017 glass exhibition will agree. Lipman works only in clear glass with some white. *Laid Table* by Lipman nearly stole the WAM show, with its opulence and room-encompassing scale. Lipman is now working on a commission for WAM’s entry lobby. Don’t miss her, as she mingles again with Murdock patrons shortly before the exciting artwork installation begins.



Thursday, November 18

ED CARPENTER, ARTIST, OREGON

Artist Ed Carpenter created *Aloft*, the elegant and epic artwork (at 360 feet in length, we can call this artwork epic!) that captivates travelers in Wichita’s Dwight D. Eisenhower National Airport lobby. For over 40 years, Carpenter has realized public art in vast spaces on a grand scale. Glass is a core ingredient for Carpenter, elevating his complicated engineering feats to a sense of lyric weightlessness. Science, engineering, and art meet in the art of this veteran pioneer. Meet Carpenter again and discover the adventurous new work he’s completed since the 2015 Wichita airport opening.

MURDOCK SOCIETY TRIP

October 22 through October 25

The Murdock Society will travel to Bentonville to visit the new facility, The Momentary, at the Crystal Bridges Museum of American Art.

EXPECT A MURDOCK PARTY during the fall! A second party is also in the works. Stay tuned for more details.